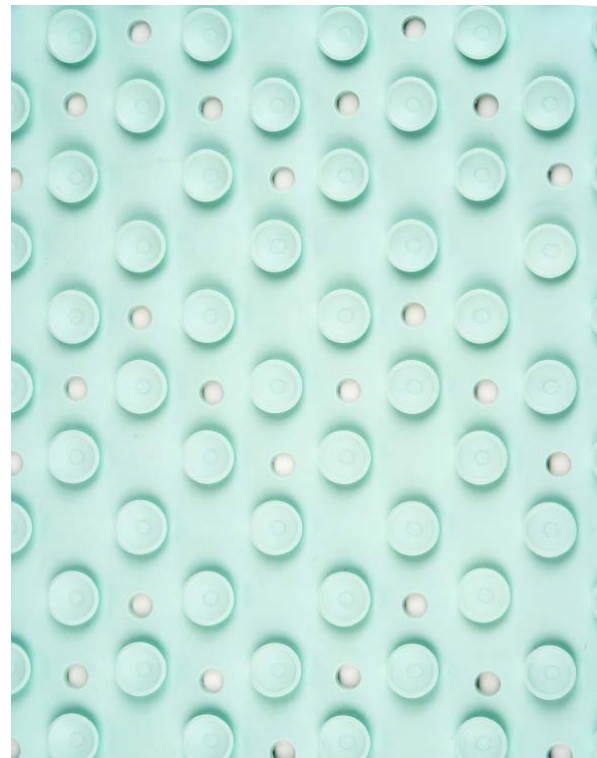


dryflex®

Thermoplastic Elastomers

Shower Mats

- Customisable soft-touch feel
- Non-slip, even when wet
- Excellent flow characteristics
- No warpage after demoulding
- Dimensional stability up to 55°C
- Available in range of colours
- Good scratch resistance
- Anti-bacterial grades available
- Tear resistance
- Resistance to detergents and soaps
- Easy processing
- 100% recyclable



Shower mats are another application for soft SBS based Dryflex® thermoplastic elastomer (TPE) compounds, where they are increasingly being used in place of traditional rubber. Key material requirements include; high flowability, no warpage after demoulding, dimensional stability up to 55°C, a good grip and a soft and comfortable feel.

Dryflex® TPEs are easy to colour, latex and PVC free and anti-bacterial grades are available, they are easy to clean while being resistant to detergents, so the colour is not adversely affected.

Dryflex® TPEs offer many advantages as an alternative to PVC and traditional rubber for shower and bath mats; while keeping many of the material properties and soft-touch appeal of rubber. Dryflex® TPEs are 100% recyclable and easy and efficient to process.