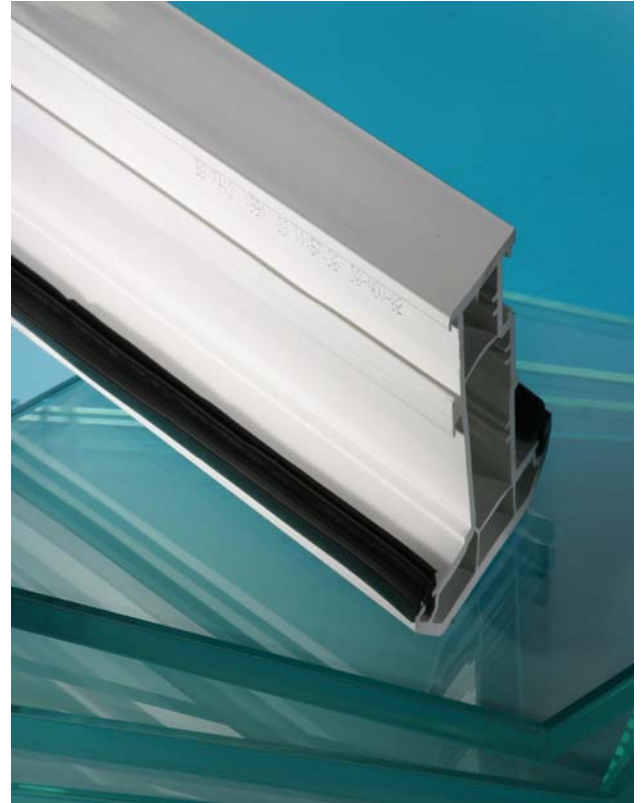


# dryflex®

## Thermoplastic Elastomers

### Window Gasket

- RAL GZ 716/1 – black and grey (outdoor as well as indoor seals)
- BS 7412:1991 Class A (static) and B (dynamic) – black and white
- Meet requirements of the “Rosenheim Test” for compatibility with acrylic primers and paints used on wooden window frames
- Excellent UV stability & Ozone resistance
- Polycarbonate compatibility
- Adhesion to technical thermoplastics - coextrusion
- Smooth surface finish – no need to coextrude a surface solid skin
- Heat weldable grades
- 100% recyclable
- Foamable grades



### Economic Design Solutions

TPEs have made significant progress in proving themselves as a quality replacement for vulcanised rubber in window and door sealing applications. Colour and co-extrusion possibilities further enhance the design versatility for window gaskets and seals.

With its superior post-shaping and sealing characteristics Dryflex® TPE is an ideal material for extruded profiles. The material can be mitre-cut and heat welded and therefore provides a major economic advantage for corner fastening, eliminating costly mould changes for different sizes. It is also possible to co-extrude profiles, using a softer Dryflex® TPE grade which can be bonded to an engineering thermoplastic.

Dryflex® TPE grades comply with national industry standards for dynamic seals in plastic window systems and are easily recycled. It can be foamed and displays surface smoothness without the need to co-extrude a solid surface skin.